

Alaska Department of Fish and Game

Habitat Section
Southeast Region



111-50-10490 Tributary 1

ADDITION

Water body name:

Quad: Juneau B-2

Upper Reach Latitude: 58.356314 **Longitude:** -134.625316

Lower Reach Latitude: 58.353530 **Longitude:** -134.622851

Survey date: 10/26/2023

Species & Lifestage:

Survey crew: FC

Findings: We surveyed this uncataloged stream using baited minnow traps and GPS. We captured juvenile coho salmon and sculpin. The stream flows through tidally-influenced wetlands near the mouth of the Mendenhall River (Table 1; Figures 1–3).

Recommendations: Add this uncataloged stream to the anadromous waters catalog for rearing coho salmon (Figure 4).

Nomination: Pending

Table 1.—111-50-10490 tributary 1 survey data.

Waypoint	Latitude	Longitude	Notes	Stream Width ft	Stream Substrate	Habitat Features	Gradient %	Sample Effort	Sample Results
1077	58.356318	-134.625337	Minnow trap soaked overnight. Some build-up of ice near trap ports, but 2+-yr CO capture.	2-4	Sand Small Gravel		1-2	MT	3 CO
1078	58.356063	-134.624964	Foot-bridge with “no trespassing” sign.						
1079	58.355289	-134.624839	Minnow trap soaked overnight.		Sand Small Gravel		0-1	MT	1 SC



Figure 1.—Downstream view of tributary 1 at waypoint 1079.



Figure 2.—Juvenile coho salmon captured at waypoint 1077.



Figure 3.—Upstream view of tributary 1 at waypoint 1077.

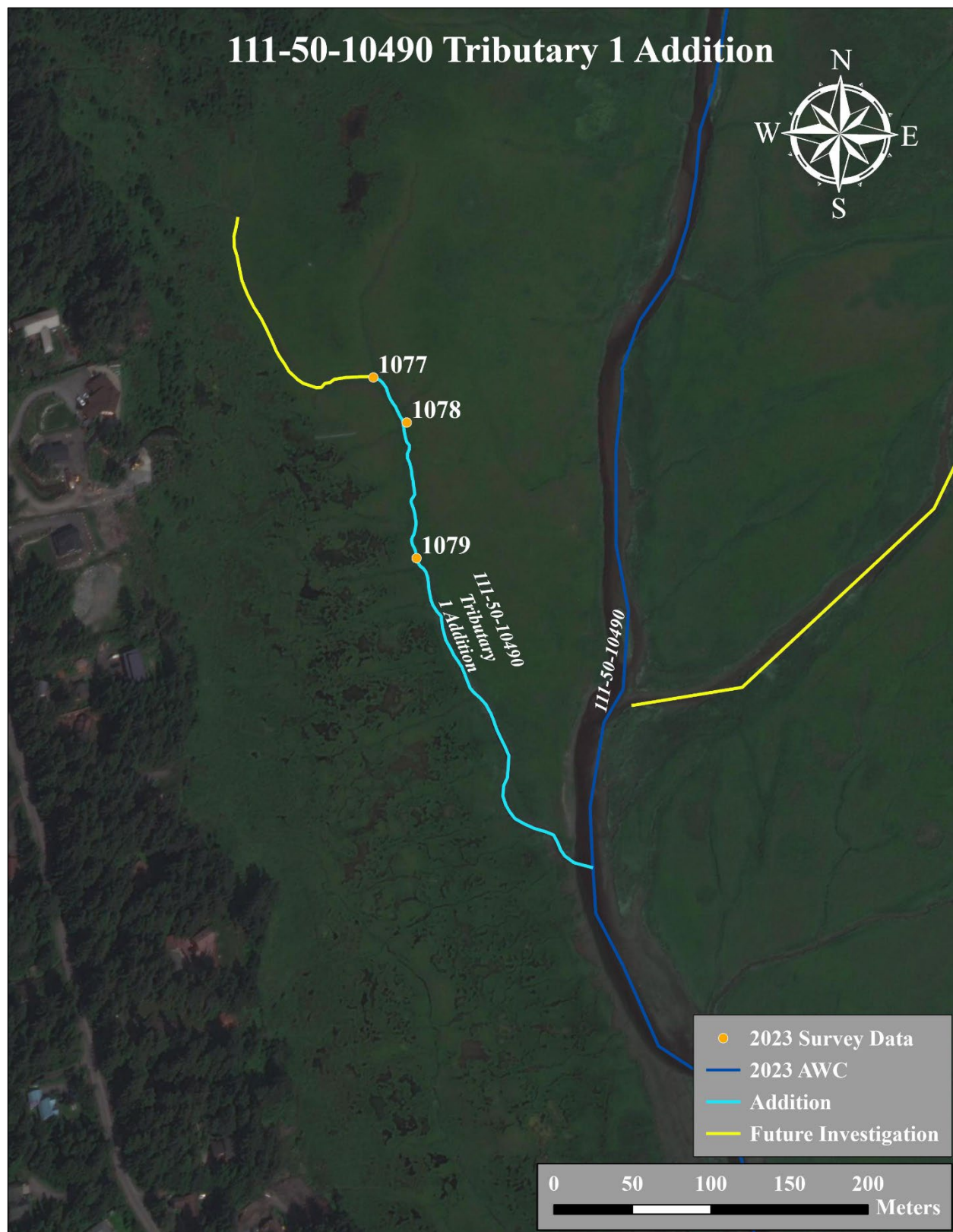


Figure 4.—111-50-10490 tributary 1 addition map.